



Mike Fritschi  
Director of Operations  
Rancho Murieta Community Services District  
October 27, 2022

RE: Chesbro Lake Bathymetric Survey and Stage-Storage Curve

To Mike Fritschi,

A bathymetric/topographic survey was completed for Chesbro Lake, and the immediate vicinity as requested per the agreement of services dated April 19, 2022. To complete the bathymetric portion of the survey a Seafloor Hydrone pontoon drone with a HydroLite sonar system and a Trimble R2 GPS unit were used to collect single beam sonar depths through a 15'x30' grid across Chesbro Lake. The topographic portion of the survey utilized a Trimble R10 GPS unit to establish a control network surrounding the lake and collect topographic data of the immediate ground, features, and structures. All GPS functionalities utilized the California Real-Time Network (CRTN) and were based on California State Plane Zone 2 projection, and the NAVD (North American Vertical Datum) 1988 vertical datum.

Also requested with the survey were a topographic contour map and a stage-storage curve to be processed from the data that was collected during field work. To create the topographic contour map, a surface of the lake bottom and the surrounding area was created in AutoCAD Civil 3D 2021 utilizing the data that was collected. The stage-storage curve for the lake was produced by creating a comparison surface to calculate the total volume at one-foot elevation intervals. The elevations that resulted from these calculations were based on the NAVD 1988 vertical datum.

After analyzing the data and comparing to the record stage-storage curve used by the district and what was calculated, a discrepancy was discovered. It was determined that this discrepancy is likely due to the difference in datums used to collect the data by Adkins and the data found on the stage-storage curve historically used by the district. If the stage-storage curve used by the district utilized NGVD (National Geodetic Vertical Datum) 1929 datum, there would be a difference in the data vertically of a few feet. To test this theory the data that was collected was shifted vertically to fit to the NGVD 1929 datum; this shift equated to be 2.52 feet vertically down from the NAVD 1988 datum in this geographic area. A new stage-storage curve was created from the shifted data and was compared to the curve historically used by the district and the curve produced from the data collected on the NAVD 1988 datum. The results showed a curve that more closely resembled the curve that has been used by the district but did not match it exactly (see Figure 1). There are other factors that may explain the difference in the data, such as: the age of the curve that is being used by the district, difference in measurement technology, in that the current measurements were taken using Sonar, and the district data would have been gathered using Photogrammetry, build-up of sedimentation on the lake bed, which is beyond our

scope of survey, and the difference in methods for calculating the volume between using a AutoCAD Civil 3D and hand calculations such as the average end area method. The listed U.S.G.S benchmark, BB7, that was used as the vertical control for the design plans most likely had an elevation published in NGVD 1929, but this could not be verified because the datasheet for said monument could not be located.

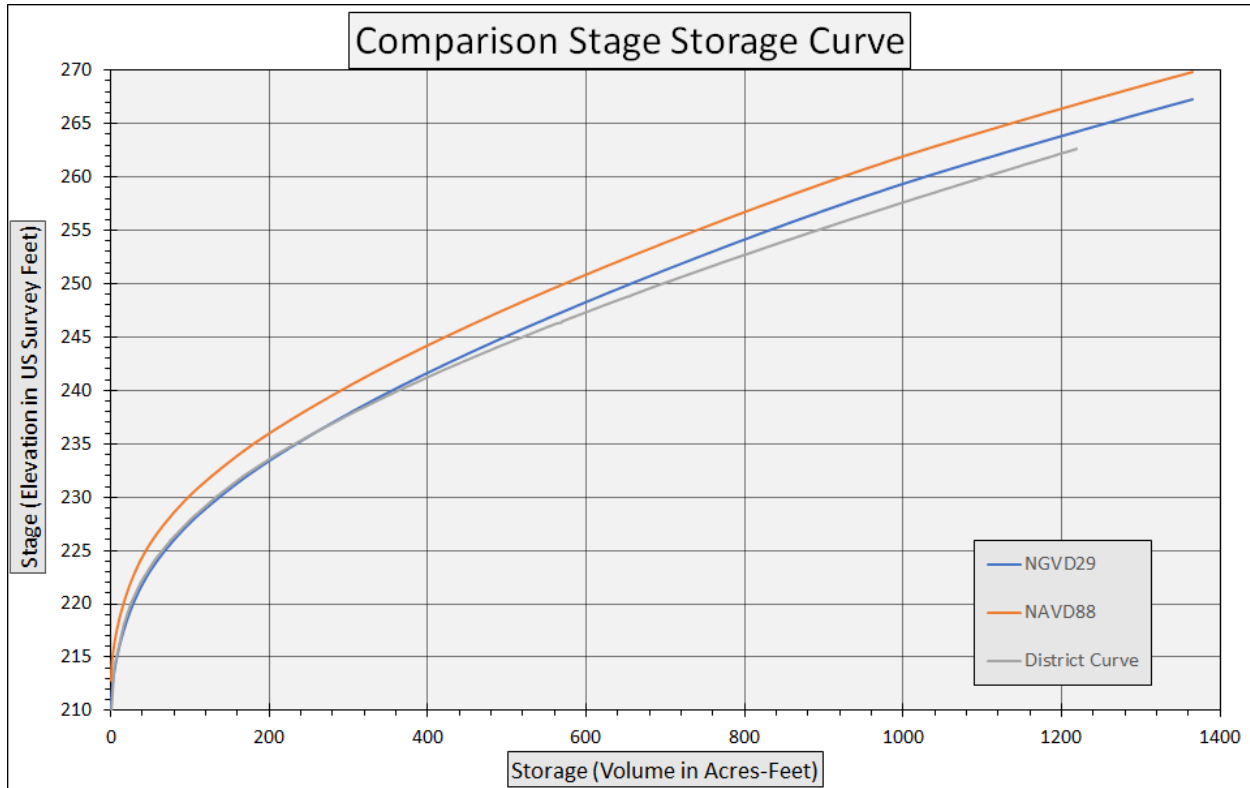
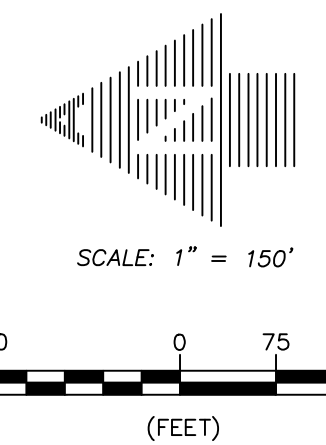
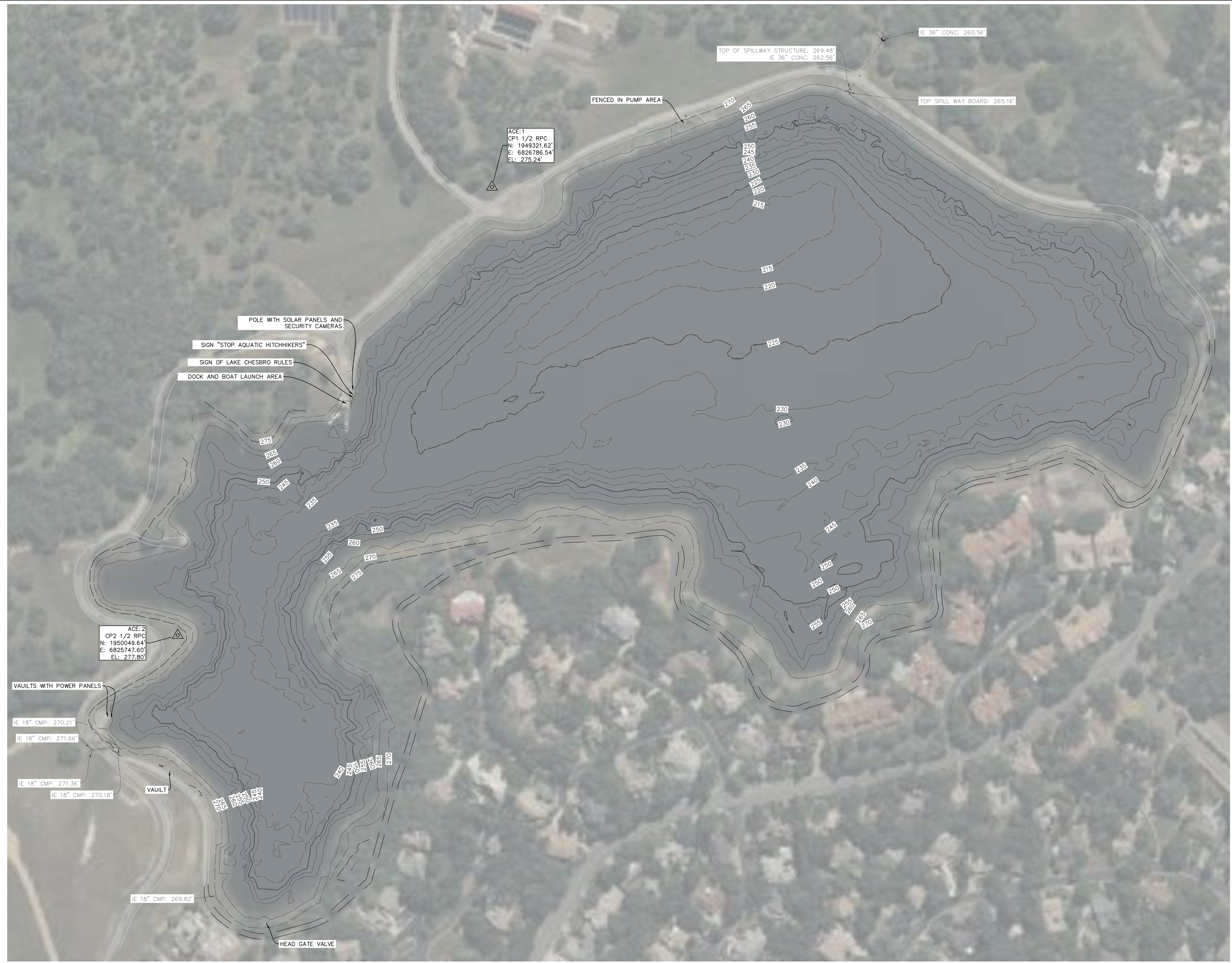


Figure 1

If you have any questions or comments, please feel free to contact me.  
Sincerely,

Mike Moser, PE  
Partner and Engineering Project Manager  
541-891-5590  
[mmoser@adkinsengineering.com](mailto:mmoser@adkinsengineering.com)





**LEGEND**

- 250 --- 5-FOOT CONTOUR INTERVAL
- 250 --- 25-FOOT CONTOUR INTERVAL



No.	REVISION	DATE	BY

**CONTOUR MAP FOR RANCHO MURIETA COMMUNITY SERVICES DISTRICT LAKE CHESBRO CONTOUR MAP WITH AERIAL**

**A-E ADKINS**  
 ENGINEERING & SURVEYING  
 1435 ESPLANADE AVENUE, KLAMATH FALLS, OR 97601  
 541.884.4666  
 w / AdkinsEngineering.com  
 REGISTERED PROFESSIONAL ENGINEER  
 MICHAEL D. ADAMS  
 LICENSE NO. 3122  
 STATE OF CALIFORNIA  
 SERVING S. OREGON & N. CALIFORNIA  
 ENGINEERING • SURVEYING • PLANNING • TESTING

DATE:	10-18-2022
PROJECT:	3971-01
FILE:	CONTOUR MAP
DESIGNED BY:	N/A
DRAWN BY:	SMA
CHECKED BY:	MDM
SURVEYED BY:	ACE
SCALE:	AS SHOWN
SHEET:	2 OF 2

- NOTES:**
- THE COORDINATE SYSTEM FOR THIS SURVEY IS CALIFORNIA STATE PLANE, ZONE 2.
  - THE VERTICAL DATUM FOR THIS SURVEY IS NAVD 1988.
  - A BOUNDARY SURVEY HAS NOT BEEN PERFORMED FOR THIS PROJECT. NOTHING ON THIS MAP SHOULD BE CONSIDERED A RECORD OF SURVEY OR BOUNDARY SURVEY DATA.
  - THIS MAP IS NOT FOR CONSTRUCTION PURPOSES.