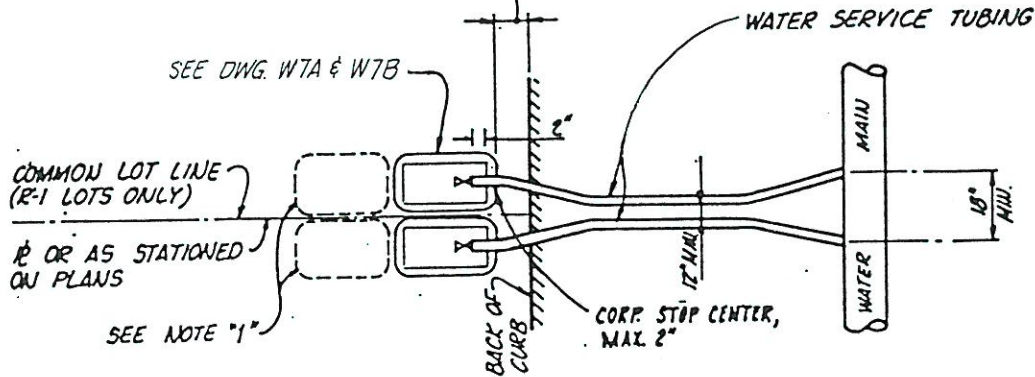
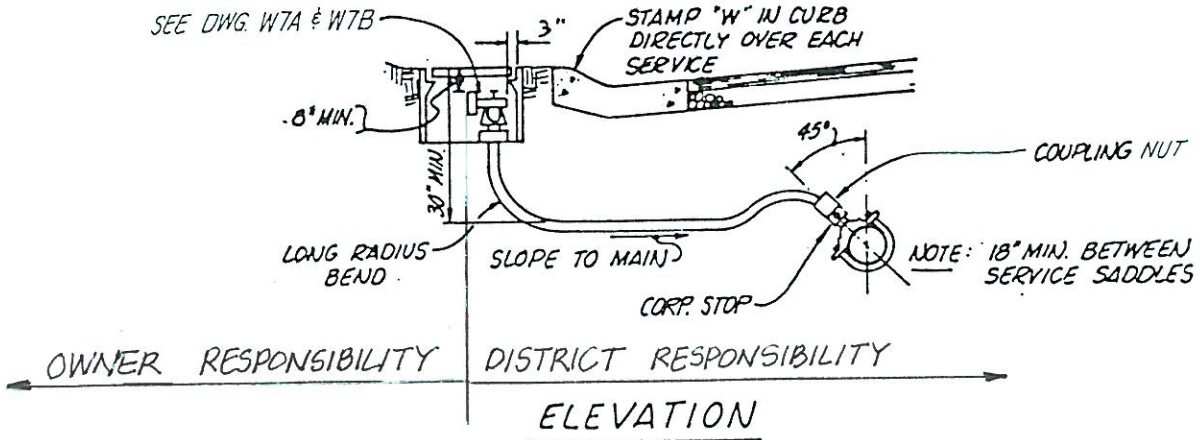


6" (54" WHEN SIDEWALKS REQUIRED).
 CENTER METER BOXES ON
 COMMON LOT CORNER, OR AT THE
 STATIONS INDICATED ON THE PLANS.
 PARALLEL WATER SERVICE LINES
 SHALL BE PLACED IN THE SAME
 TRENCH WHERE APPROPRIATE



PLAN



ELEVATION

NOTES

1. WHERE INDICATED ON THE PLANS THE CONTRACTOR SHALL PLACE A SECOND, IN LINE, METER BOX. RANCHO MURIETA COMMUNITY SERVICES DISTRICT WILL PLACE A 3/4" WATTS USB PRESSURE REDUCING VALVE IN THE SECOND BOX AT THE TIME SERVICE IS ESTABLISHED.
2. CONTRACTOR TO COORDINATE INSTALLATION OF WATER SERVICES WITH JOINT UTILITY TRENCH. JOINT UTILITIES WILL NOT BE ALLOWED IN WATER LINE TRENCH.

RANCHO MURIETA
 COMMUNITY SERVICES DISTRICT

WATER SERVICE DETAIL

Scale NONE
 Date
 Drawn By

W-1A

APPROVED BY: *[Signature]*