

RANCHO MURIETA COMMUNITY SERVICES DISTRICT

RESOLUTION NO. 88-10

RESOLUTION OF THE BOARD OF DIRECTORS OF  
RANCHO MURIETA COMMUNITY SERVICES DISTRICT  
CONCERNING DISTRICT ORGANIZATIONAL STRUCTURE

WHEREAS, the District's organization structure and compensation schedule has heretofore been set forth in Resolution 85-8 and 86-5; and,

WHEREAS, the Board of Directors desires to change that structure and schedule;

NOW THEREFORE, the Board of Directors of Rancho Murieta Community Services District resolves as follows:

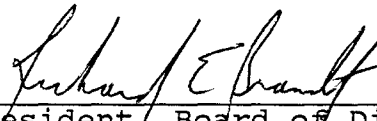
That the organization chart shown on the Attached Exhibit A is hereby adopted, and;

That the compensation schedule shown on the Attached Exhibit B is hereby adopted, and;

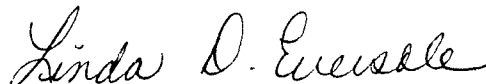
That the occupation classification plan on the attached Exhibit C is hereby adopted.

PASSED AND ADOPTED this 15th day of June, 1988 by the following roll call vote:

AYES:	Directors: Brandt, Dudley, Devlin, Simpson, Wegner
NOES:	None
ABSENT:	None
ABSTAIN:	None

  
\_\_\_\_\_  
President, Board of Directors  
Rancho Murieta Community Services  
District

ATTEST:

  
\_\_\_\_\_  
Secretary of the Board of Directors  
Rancho Murieta Community Services District



RANCHO MURIETA COMMUNITY SERVICES DISTRICT  
ORGANIZATIONAL CHART  
JUNE, 1988

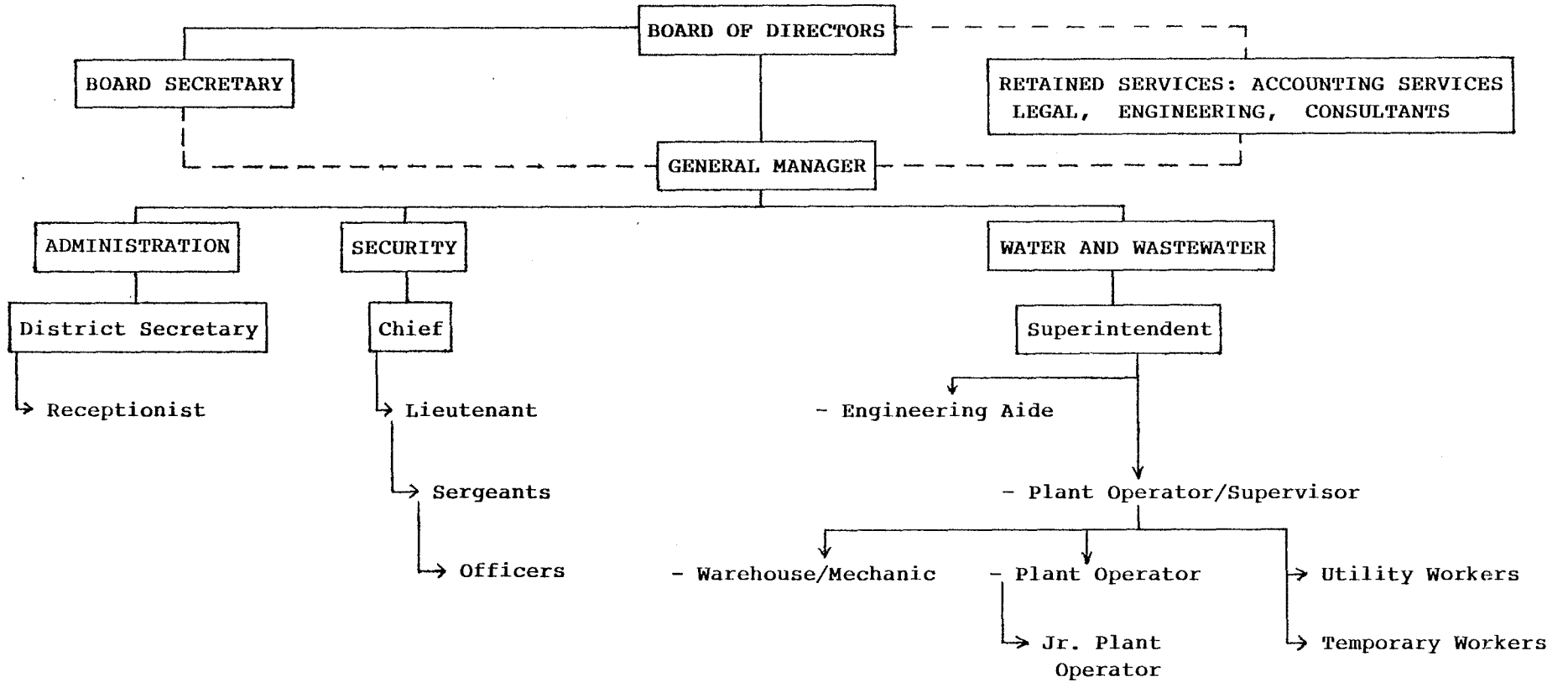


EXHIBIT B  
COMPENSATION SCHEDULE  
GRADE AND STEP

HOURLY	BI-WEEKLY											MONTHLY	ANNUALLY
6.73	538.40	10-1										1.166.53	13.998.40
6.90	551.86	10-2										1.195.70	14.348.36
7.07	565.66	10-3	11-1									1.225.59	14.707.07
7.25	579.80	10-4	11-2									1.256.23	15.074.75
7.43	594.29	10-5	11-3	12-1								1.287.63	15.451.61
7.61	609.15	10-6	11-4	12-2								1.319.83	15.837.90
7.80	624.38	10-7	11-5	12-3	13-1							1.352.82	16.233.85
8.00	639.99	10-8	11-6	12-4	13-2							1.386.64	16.639.70
8.20	655.99	10-9	11-7	12-5	13-3	14-1						1.421.31	17.055.69
8.40	672.39	10-10	11-8	12-6	13-4	14-2						1.456.84	17.482.08
8.61	689.20	10-11	11-9	12-7	13-5	14-3	15-1					1.493.26	17.919.14
8.83	706.43	10-12	11-10	12-8	13-6	14-4	15-2					1.530.59	18.367.11
9.05	724.09	10-13	11-11	12-9	13-7	14-5	15-3	16-1				1.568.86	18.826.29
9.28	742.19	10-14	11-12	12-10	13-8	14-6	15-4	16-2				1.608.08	19.296.95
9.51	760.75	10-15	11-13	12-11	13-9	14-7	15-5	16-3	17-1			1.648.28	19.779.37
9.75	779.76		11-14	12-12	13-10	14-8	15-6	16-4	17-2			1.689.49	20.273.86
9.99	799.26		11-15	12-13	13-11	14-9	15-7	16-5	17-3	18-1		1.731.73	20.780.70
10.24	819.24			12-14	13-12	14-10	15-8	16-6	17-4	18-2		1.775.02	21.300.22
10.50	839.72	19-1		12-15	13-13	14-11	15-9	16-7	17-5	18-3		1.819.39	21.832.73
10.76	860.71	19-2			13-14	14-12	15-10	16-8	17-6	18-4		1.864.88	22.378.54
11.03	882.23	19-3	20-1		13-15	14-13	15-11	16-9	17-7	18-5		1.911.50	22.938.01
11.30	904.29	19-4	20-2			14-14	15-12	16-10	17-8	18-6		1.959.29	23.511.46
11.59	926.89	19-5	20-3	21-1		14-15	15-13	16-11	17-9	18-7		2.008.27	24.099.25
11.88	950.07	19-6	20-4	21-2			15-14	16-12	17-10	18-8		2.058.48	24.701.73
12.17	973.82	19-7	20-5	21-3	22-1		15-15	16-13	17-11	18-9		2.109.94	25.319.27
12.48	998.16	19-8	20-6	21-4	22-2			16-14	17-12	18-10		2.162.69	25.952.25
12.79	1.023.12	19-9	20-7	21-5	22-3	23-1		16-15	17-13	18-11		2.216.75	26.601.06
13.11	1.048.70	19-10	20-8	21-6	22-4	23-2			17-14	18-12		2.272.17	27.266.08
13.44	1.074.91	19-11	20-9	21-7	22-5	23-3	24-1		17-15	18-13		2.328.98	27.947.74
13.77	1.101.79	19-12	20-10	21-8	22-6	23-4	24-2			18-14		2.387.20	28.646.43
14.12	1.129.33	19-13	20-11	21-9	22-7	23-5	24-3	25-1		18-15		2.446.88	29.362.59
14.47	1.157.56	19-14	20-12	21-10	22-8	23-6	24-4	25-2				2.508.05	30.096.65
14.83	1.186.50	19-15	20-13	21-11	22-9	23-7	24-5	25-3	26-1			2.570.76	30.849.07
15.20	1.216.17		20-14	21-12	22-10	23-8	24-6	25-4	26-2			2.635.02	31.620.30
15.58	1.246.57		20-15	21-13	22-11	23-9	24-7	25-5	26-3	27-1		2.700.90	32.410.81
15.97	1.277.73			21-14	22-12	23-10	24-8	25-6	26-4	27-2		2.768.42	33.221.08
16.37	1.309.68			21-15	22-13	23-11	24-9	25-7	26-5	27-3		2.837.63	34.051.60
16.78	1.342.42				22-14	23-12	24-10	25-8	26-6	27-4		2.908.57	34.902.89
17.20	1.375.98				22-15	23-13	24-11	25-9	26-7	27-5		2.981.29	35.775.46
17.63	1.410.38					23-14	24-12	25-10	26-8	27-6		3.055.82	36.669.85
18.07	1.445.64					23-15	24-13	25-11	26-9	27-7		3.132.22	37.586.60
18.52	1.481.78						24-14	25-12	26-10	27-8		3.210.52	38.526.26
18.99	1.518.82						21-15	25-13	26-11	27-9		3.290.78	39.489.42
19.46	1.556.79							25-14	26-12	27-10		3.373.05	40.476.65
19.95	1.595.71							25-15	26-13	27-11		3.457.38	41.488.57
20.45	1.635.61								26-14	27-12		3.543.82	42.525.79
20.96	1.676.50								26-15	27-13		3.632.41	43.588.93
21.48	1.718.41									27-14		3.723.22	44.678.65
22.02	1.761.37									27-15		3.816.30	45.795.62

EXHIBIT C

RANCHO MURIETA COMMUNITY  
SERVICES DISTRICT  
JUNE 15, 1988

OCCUPATION CLASSIFICATION PLAN

<u>DEPARTMENT/JOB DESCRIPTION</u>	<u>OCCUPATION CLASS</u>
<u>Administration:</u>	
Receptionist	13
<u>Water and Wastewater:</u>	
Plant Operator/Field Supervisor	24
Plant Operator	19
Warehouse/Mechanic	19
Jr. Plant Operator	18
Engineering Aide	15
Utility Worker	15
Temporary Worker	10
<u>Security:</u>	
Lieutenant	18
Sergeant	17
Officer II	16
Officer I	14